

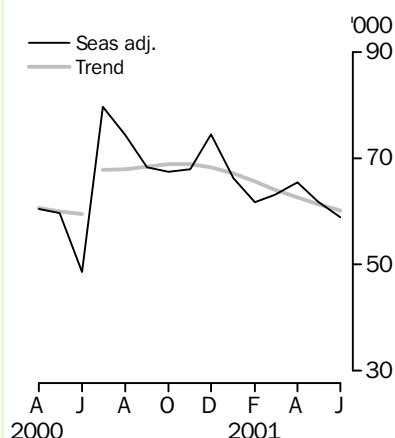
NEW MOTOR VEHICLE REGISTRATIONS

AUSTRALIA
PRELIMINARY

EMBARGO: 11:30AM (CANBERRA TIME) FRI 27 JUL 2001

New vehicle registrations

Total vehicles



JUNE KEY FIGURES

TREND ESTIMATES

	Jun 2001	% change May 2001 to Jun 2001	% change Jun 2000 to Jun 2001
Total new motor vehicle registrations	60 268	-2.0	..
Passenger vehicles	50 671	-2.0	..
Other vehicles	9 597	-1.8	..

SEASONALLY ADJUSTED

	Jun 2001	% change May 2001 to Jun 2001	% change Jun 2000 to Jun 2001
Total new motor vehicle registrations	58 954	-4.8	21.3
Passenger vehicles	49 286	-6.0	31.0
Other vehicles	9 668	2.0	-12.0

ORIGINAL ESTIMATES

	Jun 2001	% change May 2001 to Jun 2001	% change Jun 2000 to Jun 2001
Total new motor vehicle registrations	70 652	7.9	16.1
Passenger vehicles	57 620	5.6	26.6
Other vehicles	13 032	19.1	-15.1

JUNE KEY POINTS

TREND ESTIMATES

- The trend estimate for total new motor vehicle registrations fell by 2.0% in June 2001 compared with the previous month. This is the eighth consecutive month that the trend has fallen since October 2000. All States and the Australian Capital Territory recorded falls in each of the six months since December 2000.

TAKE CARE!
Trend estimates are revised as new monthly data become available.

SEASONALLY ADJUSTED ESTIMATES

- The seasonally adjusted estimate for total new motor vehicle registrations fell by 4.8% in June 2001 compared with the previous month. Rises were recorded in Queensland, Western Australia and Tasmania while falls were recorded in the other States and in the two Territories.

ORIGINAL ESTIMATES

- Total new motor vehicle registrations rose by 7.9% in June 2001 compared with the previous month. A fall was recorded in Tasmania while rises were recorded in all other States and in the two Territories. Passenger vehicle registrations rose by 5.6% and other vehicle registrations rose by 19.1%.

- For further information about these and related statistics, contact Robin Walden on Brisbane 07 3222 6180, or the National Information and Referral Service on 1300 135 070.

NOTES

FORTHCOMING ISSUES

ISSUE	RELEASE DATE
July 2001	31 August 2001
August 2001	28 September 2001
September 2001	26 October 2001
October 2001	30 November 2001
November 2001	24 December 2001
December 2001	25 January 2002

.....

CHANGES IN THIS ISSUE

There are no changes in this issue.

.....

TREND REVISIONS

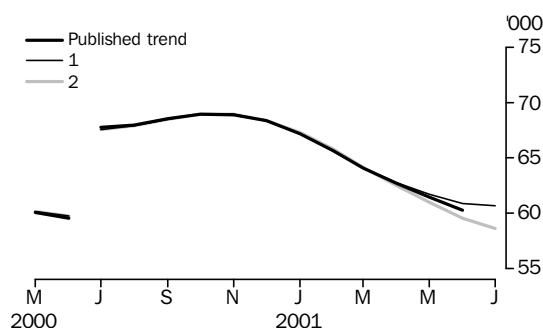
The most recent trend estimates are likely to be revised when new seasonally adjusted estimates become available.

The graph below presents the effect of two possible scenarios on the previous trend estimates:

- 1 The July seasonally adjusted estimate for total vehicle registrations is higher than the June seasonally adjusted estimate by 4.1%.
- 2 The July seasonally adjusted estimate for total vehicle registrations is lower than the June seasonally adjusted estimate by -4.1%.

The percentage change of 4.1% was chosen because the average absolute percentage change, based on the last 11 years, has been 4.1%.

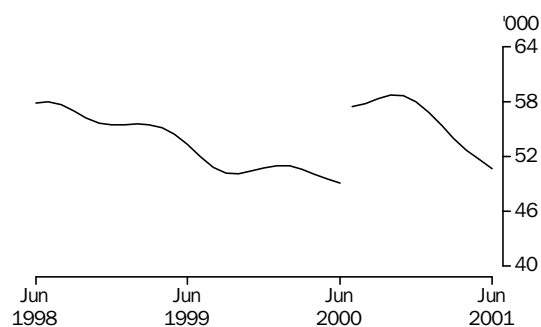
TAKE CARE!
Trend estimates are revised as new monthly data become available.



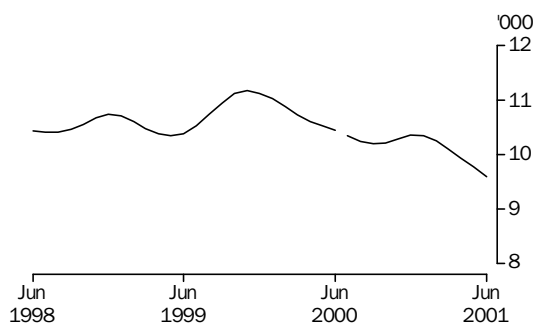
Dennis Trewin
Australian Statistician

VEHICLE REGISTRATIONS BY TYPE: Trend series (a)

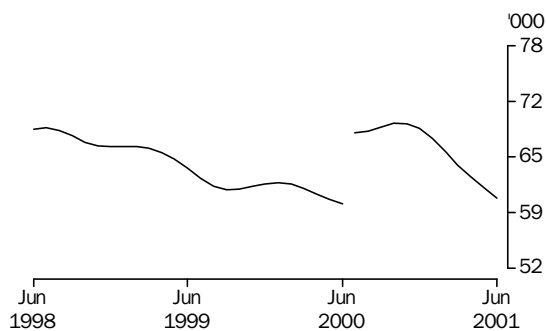
PASSENGER VEHICLES



OTHER VEHICLES



TOTAL VEHICLES (EXCLUDING MOTOR CYCLES)



(a) A break in the trend series occurred between June and July 2000 as a result of the introduction of the New Tax System.

NEW MOTOR VEHICLE, Registration By Type: All Series

NUMBER.....

CHANGE FROM PREVIOUS MONTH.....

Month	Passenger vehicles no.	Other vehicles no.	Total no.	Passenger vehicles %	Other vehicles %	Total %
ORIGINAL						
2000						
April	41 649	8 664	50 313	-26.0	-24.4	-25.7
May	51 554	12 585	64 139	23.8	45.3	27.5
June	45 521	15 358	60 879	-11.7	22.0	-5.1
July	69 632	9 354	78 986	53.0	-39.1	29.7
August	65 811	10 557	76 368	-5.5	12.9	-3.3
September	54 759	9 227	63 986	-16.8	-12.6	-16.2
October	56 529	9 734	66 263	3.2	5.5	3.6
November	61 282	10 106	71 388	8.4	3.8	7.7
December	62 717	10 023	72 740	2.3	-0.8	1.9
2001						
January	46 985	8 158	55 143	-25.1	-18.6	-24.2
February	49 281	9 345	58 626	4.9	14.6	6.3
March	56 765	10 863	67 628	15.2	16.2	15.4
April	48 624	8 676	57 300	-14.3	-20.1	-15.3
May	54 562	10 946	65 508	12.2	26.2	14.3
June	57 620	13 032	70 652	5.6	19.1	7.9

SEASONALLY ADJUSTED

2000						
April	50 074	10 417	60 491	-0.7	0.1	-0.6
May	48 821	10 873	59 694	-2.5	4.4	-1.3
June	37 610	10 985	48 595	-23.0	1.0	-18.6
July	70 133	9 547	79 680	86.5	-13.1	64.0
August	63 915	10 572	74 487	-8.9	10.7	-6.5
September	58 129	10 171	68 300	-9.1	-3.8	-8.3
October	57 434	10 160	67 594	-1.2	-0.1	-1.0
November	58 145	9 844	67 989	1.2	-3.1	0.6
December	63 825	10 756	74 581	9.8	9.3	9.7
2001						
January	55 635	10 676	66 311	-12.8	-0.7	-11.1
February	51 787	10 039	61 826	-6.9	-6.0	-6.8
March	53 081	10 168	63 249	2.5	1.3	2.3
April	55 426	10 045	65 471	4.4	-1.2	3.5
May	52 421	9 475	61 896	-5.4	-5.7	-5.5
June	49 286	9 668	58 954	-6.0	2.0	-4.8

TREND ESTIMATES (a)

2000						
April	50 065	10 610	60 675	-1.0	-1.1	-1.0
May	49 572	10 528	60 100	-1.0	-0.8	-0.9
June	49 123	10 449	59 572	-0.9	-0.8	-0.9
July	57 478	10 343	67 821
August	57 760	10 244	68 004	0.5	-1.0	0.3
September	58 349	10 198	68 547	1.0	-0.4	0.8
October	58 735	10 212	68 947	0.7	0.1	0.6
November	58 634	10 290	68 924	-0.2	0.8	0.0
December	57 996	10 358	68 354	-1.1	0.7	-0.8
2001						
January	56 843	10 351	67 194	-2.0	-0.1	-1.7
February	55 402	10 260	65 662	-2.5	-0.9	-2.3
March	53 998	10 114	64 112	-2.5	-1.4	-2.4
April	52 756	9 939	62 695	-2.3	-1.7	-2.2
May	51 694	9 777	61 471	-2.0	-1.6	-2.0
June	50 671	9 597	60 268	-2.0	-1.8	-2.0

(a) A break in the trend series occurred between June and July 2000 as a result of the introduction of the New Tax System.

NEW MOTOR VEHICLES, Registrations By Type: **Original**

Month	Passenger vehicles	Light commercial vehicles	Rigid trucks	Articulated trucks	Non-freight carrying trucks	Buses	Total (excludes motor cycles)	Motor cycles
2000								
April	41 649	7 127	968	198	58	313	50 313	2 518
May	51 554	10 625	1 348	196	61	355	64 139	2 770
June	45 521	13 170	1 354	193	113	528	60 879	2 259
July	69 632	7 508	1 047	485	62	252	78 986	2 842
August	65 811	8 689	1 138	331	90	309	76 368	3 125
September	54 759	7 436	1 057	297	148	289	63 986	3 008
October	56 529	7 969	1 164	288	76	237	66 263	3 177
November	61 282	8 234	1 179	299	105	289	71 388	3 423
December	62 717	8 402	1 001	221	124	275	72 740	2 819
2001								
January	46 985	7 019	629	226	55	229	55 143	2 668
February	49 281	7 849	834	264	176	222	58 626	2 563
March	56 765	9 207	1 002	244	160	250	67 628	3 221
April	48 624	7 254	866	219	118	219	57 300	2 655
May	54 562	9 113	1 159	212	175	287	65 508	2 957
June	57 620	11 165	1 097	329	171	270	70 652	2 613

NEW MOTOR VEHICLES, Registrations By State: All series

Month	New South Wales	Victoria	Queensland	South Australia	Western Australia	Tasmania	Northern Territory	Australian Capital Territory	Australia
ORIGINAL									
2000									
April	17 781	12 964	9 572	2 900	4 627	937	611	921	50 313
May	22 781	16 487	12 061	3 896	5 843	1 126	760	1 185	64 139
June	21 062	15 074	12 968	3 663	5 097	1 059	897	1 059	60 879
July	27 323	21 037	15 649	4 616	7 360	1 205	555	1 241	78 986
August	27 024	19 878	14 357	4 538	7 086	1 472	701	1 312	76 368
September	20 908	17 197	12 122	4 138	6 386	1 545	590	1 100	63 986
October	22 095	18 629	12 428	4 241	5 978	1 241	601	1 050	66 263
November	24 062	19 859	12 948	4 534	6 610	1 436	614	1 325	71 388
December	23 547	20 942	13 362	4 649	6 407	2 035	601	1 197	72 740
2001									
January	18 657	15 045	10 214	3 436	5 286	1 041	432	1 032	55 143
February	20 007	15 940	11 129	3 637	5 482	996	430	1 005	58 626
March	23 000	17 537	13 479	4 169	6 460	1 195	583	1 205	67 628
April	19 167	15 804	10 913	3 668	5 048	925	726	1 049	57 300
May	22 383	18 363	11 884	4 168	5 705	1 174	696	1 135	65 508
June	22 822	18 797	15 254	4 584	6 213	1 108	714	1 160	70 652
SEASONALLY ADJUSTED									
2000									
April	21 189	15 993	11 246	3 518	5 516	1 270	640	1 119	60 491
May	20 655	15 756	11 294	3 779	5 336	1 108	636	1 130	59 694
June	17 117	12 014	9 882	2 858	4 156	1 068	633	867	48 595
July	26 736	21 604	15 396	4 697	8 218	1 156	631	1 242	79 680
August	27 425	18 682	14 076	4 370	6 760	1 327	684	1 163	74 487
September	22 634	18 105	13 336	4 303	6 741	1 328	675	1 178	68 300
October	22 151	18 870	12 973	4 358	6 225	1 253	634	1 130	67 594
November	22 673	18 548	13 177	4 176	6 217	1 390	595	1 213	67 989
December	25 234	21 186	13 688	4 688	6 423	1 393	742	1 227	74 581
2001									
January	22 114	19 108	11 775	4 333	5 886	1 311	553	1 231	66 311
February	20 996	16 646	11 828	3 784	5 729	1 282	494	1 067	61 826
March	21 401	16 243	12 605	3 936	6 087	1 309	493	1 175	63 249
April	21 246	18 577	12 427	4 158	5 913	1 210	721	1 219	65 471
May	20 938	17 464	11 485	4 061	5 117	1 189	558	1 084	61 896
June	19 447	15 899	11 721	3 831	5 327	1 191	545	993	58 954
TREND ESTIMATES (a)									
2000									
April	21 323	15 817	11 425	3 703	5 499	1 176	613	1 119	60 675
May	21 094	15 643	11 408	3 655	5 399	1 158	623	1 120	60 100
June	20 917	15 493	11 307	3 617	5 314	1 163	636	1 125	59 572
July	22 449	17 906	13 419	4 333	6 740	1 191	649	1 134	67 821
August	22 518	18 105	13 355	4 324	6 654	1 239	659	1 150	68 004
September	22 715	18 520	13 312	4 335	6 544	1 288	664	1 169	68 547
October	22 899	18 910	13 213	4 344	6 416	1 330	654	1 181	68 947
November	22 966	19 106	13 046	4 335	6 292	1 353	636	1 190	68 924
December	22 869	19 026	12 831	4 299	6 175	1 350	611	1 193	68 354
2001									
January	22 557	18 660	12 581	4 226	6 059	1 331	590	1 190	67 194
February	22 050	18 136	12 347	4 135	5 937	1 303	577	1 177	65 662
March	21 474	17 621	12 163	4 057	5 802	1 270	571	1 154	64 112
April	20 929	17 187	12 000	3 994	5 652	1 236	570	1 127	62 695
May	20 448	16 844	11 856	3 949	5 499	1 207	571	1 097	61 471
June	19 978	16 483	11 734	3 896	5 358	1 184	567	1 068	60 268

(a) A break in the trend series occurred between June and July 2000 as a result of the introduction of the New Tax System.

NEW PASSENGER VEHICLES, Top Make/models: **Original**—June 2001

<i>Make/Model</i>	<i>New South Wales</i>	<i>Victoria</i>	<i>Queensland</i>	<i>South Australia</i>	<i>Western Australia</i>	<i>Tasmania</i>	<i>Northern Territory</i>	<i>Australian Capital Territory</i>	Australia
Holden									
Commodore/Calais	2 462	2 094	1 788	654	667	109	29	129	7 932
Astra	1 053	845	511	225	184	31	11	68	2 928
Barina	336	241	208	111	66	29	6	25	1 022
Other	464	419	245	88	121	13	4	23	1 377
Total	4 315	3 599	2 752	1 078	1 038	182	50	245	13 259
Toyota									
Camry/Vienta	1 010	707	709	135	182	39	32	44	2 858
Corolla	812	604	653	131	249	37	55	33	2 574
Avalon	491	615	328	55	81	10	45	15	1 640
Other	1 024	709	812	175	339	32	117	34	3 242
Total	3 337	2 635	2 502	496	851	118	249	126	10 314
Ford									
Falcon/Fairmont	1 385	1 929	1 039	287	439	67	36	83	5 265
Laser	373	451	372	123	110	21	7	19	1 476
Escape	102	85	57	23	12	5	2	1	287
Other	162	261	135	54	45	9	6	10	682
Total	2 022	2 726	1 603	487	606	102	51	113	7 710
Mitsubishi									
Magna	428	396	409	250	211	30	26	47	1 797
Lancer	432	426	304	110	136	16	15	46	1 485
Pajero	264	155	227	40	73	10	13	12	794
Other	249	170	130	108	46	12	8	23	746
Total	1 373	1 147	1 070	508	466	68	62	128	4 822
Nissan									
Pulsar	647	475	417	80	173	24	15	48	1 879
Patrol	227	179	232	48	106	10	10	5	817
Pathfinder	121	92	57	12	22	1	1	1	307
Other	108	117	146	27	37	1	1	13	450
Total	1 103	863	852	167	338	36	27	67	3 453
Mazda									
323	411	281	202	81	79	19	5	21	1 099
Tribute	301	213	153	37	44	19	6	12	785
626	143	113	101	38	20	6	2	6	429
Other	228	133	163	25	36	5	5	8	603
Total	1 083	740	619	181	179	49	18	47	2 916
Hyundai									
Accent	380	246	184	72	366	19	6	20	1 293
Lantra/Elantra	180	114	81	41	131	11	1	6	565
Santa Fe	86	54	62	13	43	3	2	3	266
Other	152	116	110	33	49	1	1	6	468
Total	798	530	437	159	589	34	10	35	2 592

EXPLANATORY NOTES

INTRODUCTION

- 1** This publication presents monthly data for registrations of new motor vehicles.
- 2** The statistics in this publication use the Vehicle Identification Number (VIN), adopted by the State and Territory motor vehicle registration authorities. The information contained in the VIN allows more accurate classification of vehicles. In the case of some States, data processed using the VIN system are not strictly comparable with data processed prior to December 1990.

SCOPE AND COVERAGE

- 3** Motor vehicle registration statistics are obtained from State and Territory motor vehicle registration authorities. The statistics reflect information recorded in registration documents. While the statistics do not depart significantly from actual registrations during the period, a number of registrations processed in a month actually relate to vehicles registered prior to that month.
- 4** New motor vehicle registrations are obtained from New South Wales, Victoria, Queensland and Western Australia registration authorities on a weekly basis. Other registries provide data for each calendar month. The ABS processes the weekly registration data provided for the above-mentioned States and includes data for the relevant month in this publication. Data referring to the next month are withheld and included in the next month's publication. In some months, the ABS processes five weeks of data for the above States, while other months include four weeks of data. In months where five weeks of data are processed and depending on the actual pattern of registration processing, it is possible that there will be a greater number of registrations recorded because the carry forward from the previous month is likely to be greater than the carry over to the next month.
- 5** The scope of the statistics:
 - includes:
 - passenger vehicles
 - light commercial vehicles
 - trucks
 - buses
 - motorcycles (note: not included in totals)
 - vehicles with diplomatic and consular plates
 - State and Commonwealth owned vehicles
 - excludes:
 - vehicles belonging to the defence forces
 - recreation vehicles such as trail bikes and sand dune buggies (in those States where registration is required).

SEASONAL ADJUSTMENT

- 6** Seasonal adjustment is a means of removing the estimated effects of normal seasonal variation from the series so that the effects of other influences can be more clearly recognised.
- 7** Seasonal adjustment does not remove from the series the effect of irregular or non-seasonal influences (e.g. the introduction of new models, processing delays, industrial disputes).

EXPLANATORY NOTES

SEASONAL ADJUSTMENT

continued

8 Irregular influences that are highly volatile can make it difficult to interpret the series even after adjustment for seasonal variation.

9 Extreme care should be exercised in using the seasonally adjusted series for new motor vehicle registrations in Tasmania, the Northern Territory and the Australian Capital Territory. The small numbers and volatile nature of these data makes reliable estimation of the seasonal pattern very difficult.

10 Seasonally adjusted series are calculated for the 'Passenger vehicles', 'Other vehicles' and 'Total vehicles' series for each State and Territory and are aggregated to obtain the total for Australia.

11 Seasonal adjustment factors are analysed and revised as necessary annually.

TREND ESTIMATES

12 The smoothing of seasonally adjusted series to create trend estimates reduces the impact of the irregular component of the seasonally adjusted series. The trend estimates are derived by applying a 13-term Henderson-weighted moving average to the respective seasonally adjusted series. These trend series are used to analyse the underlying behaviour of the series over time.

13 While this smoothing technique enables trend estimates to be produced for the latest month, it does result in revisions to the trend estimates for the most recent months as data for subsequent months become available. Generally subsequent revisions become smaller and after three months, usually have a negligible impact on the series. Changes in the original data and re-estimation of seasonal factors may also lead to revisions to the trend. For more information, see *A Guide to Interpreting Time Series—Monitoring 'Trends'—an Overview* (Cat. no. 1348.0) or contact the Assistant Director, Time Series Analysis on (02) 6252 6345.

RELATED PUBLICATIONS

14 For a more detailed break-up of the monthly figures presented here, enquiries should be made to the National Information and Referral Service on 1300 135 070 or to Client Services in any ABS office.

Annual data on the latest total vehicle registrations are published in *Motor Vehicle Census, Australia*, 31 October 1999 (Cat. no. 9309.0).

SYMBOLS AND OTHER USAGES

. . . not applicable.

G L O S S A R Y

Articulated trucks	Vehicles constructed primarily for load carrying consisting of a prime mover having no significant load carrying area but with a turn table device which can be linked to a trailer. With or without a trailer the gross combination mass will be 3.5 tonnes or more.
Buses	Vehicles constructed for the carriage of passengers. Included are all passenger vehicles with 10 seats or more, including the driver's seat.
Light commercial vehicles	Describes goods carrying vehicles less than 3.5 tonnes gross vehicle mass. Included are utilities, panel vans, cab-chassis and forward control vehicles (whether four-wheel drive or not).
Motor cycles	Includes 2 and 3 wheeled mopeds, scooters, motor tricycles and motor cycles with side cars.
Non-freight carrying trucks	Includes specialist vehicles such as ambulances, mobile cranes or vehicles fitted with special purpose equipment and having no goods carrying capacity.
Passenger vehicles	Includes cars, station wagons, four-wheel drive passenger vehicles and forward control passenger vehicles with up to nine seats (including the driver).
Registrations	This includes all registrations processed by the motor vehicle registration authorities in the States and Territories during the relevant period.
Rigid trucks	Vehicles constructed primarily for load carrying with a gross vehicle mass of 3.5 tonnes or more.
VIN	The Vehicle Identification Number (VIN) uniquely identifies each vehicle. Embedded in the number are details of make and model together with other relevant information about the vehicle. The VIN is collected by the motor vehicle registration authorities at the time of registration.

FOR MORE INFORMATION...

- INTERNET** www.abs.gov.au the ABS web site is the best place to start for access to summary data from our latest publications, information about the ABS, advice about upcoming releases, our catalogue, and Australia Now—a statistical profile.
- LIBRARY** A range of ABS publications is available from public and tertiary libraries Australia-wide. Contact your nearest library to determine whether it has the ABS statistics you require, or visit our web site for a list of libraries.
- CPI INFOLINE** For current and historical Consumer Price Index data, call 1902 981 074 (call cost 77c per minute).
- DIAL-A-STATISTIC** For the latest figures for National Accounts, Balance of Payments, Labour Force, Average Weekly Earnings, Estimated Resident Population and the Consumer Price Index call 1900 986 400 (call cost 77c per minute).

INFORMATION SERVICE

Data which have been published and can be provided within five minutes are free of charge. Our information consultants can also help you to access the full range of ABS information—ABS user-pays services can be tailored to your needs, time frame and budget. Publications may be purchased. Specialists are on hand to help you with analytical or methodological advice.

- PHONE** **1300 135 070**
- EMAIL** **client.services@abs.gov.au**
- FAX** 1300 135 211
- POST** Client Services, ABS, GPO Box 796, Sydney 1041

WHY NOT SUBSCRIBE?

ABS subscription services provide regular, convenient and prompt deliveries of ABS publications and products as they are released. Email delivery of monthly and quarterly publications is available.

- PHONE** 1300 366 323
- EMAIL** subscriptions@abs.gov.au
- FAX** 03 9615 7848
- POST** Subscription Services, ABS, GPO Box 2796Y, Melbourne 3001



2930100006016
ISSN 1323-4528

RRP \$17.00